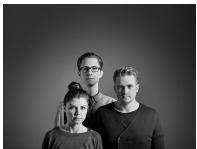


## Philippa Armchair



## Philippa armchair

'Philippa' combines a very Nordic and modern look, yet retains references to 1950s and 1960s classic armchairs. The chair is created by the design group Busetti Garuti Redaelli, designed with softness, comfort and an organic shape in mind.



**Busetti Garuti Redaelli**

### Design

**Fabric**  
Fabric Baize

**Colour**  
Grey

**Legs**  
White oiled oak

### Specification

**Depth**  
82 cm

**Seat height**  
37 cm

**Seat depth**  
51 cm

**Width**  
83 cm

**Back height**  
72 cm

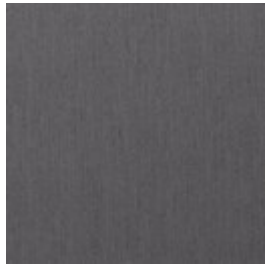
# Material and colour

## **BAIZE - FABRIC**

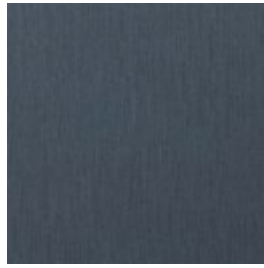
Baize is an extra soft upholstery fabric that provides superior comfort. The material has a beautiful, classic look that suits most furniture.



Antracit



Dark Grey



Dust Blue



Dust Green



Grey



Light Grey



Sand

## **LONDON - FABRIC**

London is a strong upholstery fabric and comes in a variety of colors. It is a beautifully woven fabric with a pure and elegant look. London is 100% polyester.



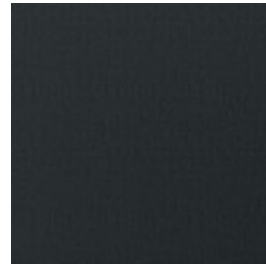
Blue



Brown



Burgundy



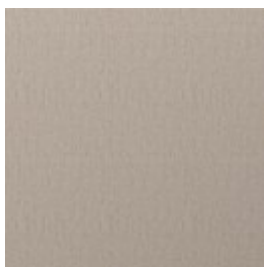
Dark Grey



Dust Green



Grey Brown



Light Beige



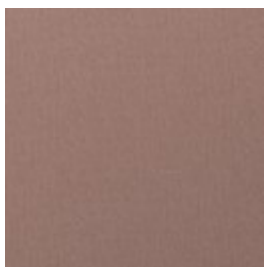
Light Grey



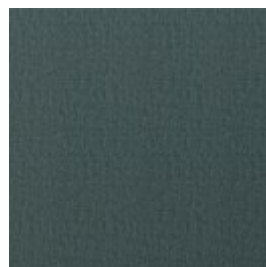
Mint



Multi Grey



Rosa



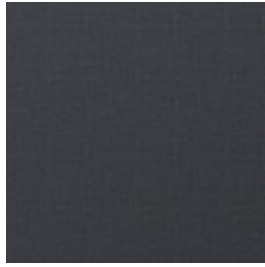
Sea green

# Material and colour

**LINOSO - FABRIC** Linoso is woven from 100% polyester, making it very durable. The fabric features a natural look and a fine structure that is well-suited for most furniture.



Antracit



Blue Grey



Brown Melange



Charcoal



Dark Grey



Dust Blue



Grey Brown



Light Grey



Linen



Mint



Terra

**QUAL - WOOL** Qual is woven from 100% pure new wool – specially developed for Bolia. The soft structure makes it comfortable and user-friendly. The wool's natural content of lanolin makes the fabric easy to keep clean.



Army Melange



Dark Grey Melange



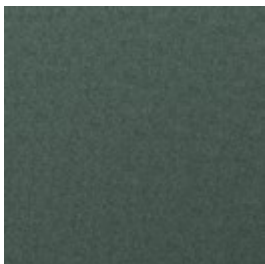
Grey Melange



Light Grey Melange



Navy Melange



Sea green



Stone Grey

# Material and colour

**MEMORY - FABRIC** - Memory is an upholstery toned with three colours that give the fabric a totally unique character. A durable and hard-wearing fabric with a beautiful and elegant structure that not only adds an exclusive look to any piece of furniture, but is also soft and comfortable to sit in.



Antracit



Blue



Grey



Grey/White



Light Brown



Light Grey

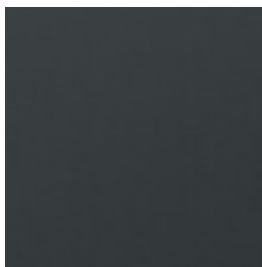
**RITZ - VELVET** - Ritz is a beautiful and velvety upholstery fabric. The velour fabric is exclusive in its appearance and its properties. Choose Ritz if you want a piece of furniture that stands out from the crowd.



Curry



Dark Blue



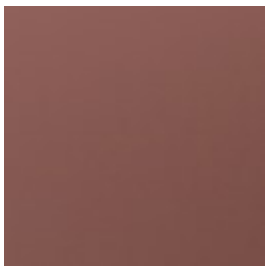
Forest Green



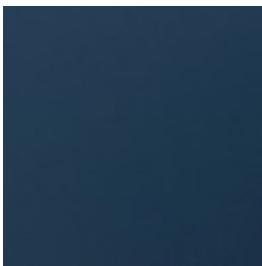
Grey



Light Grey



Light Rosa



Petrol



Steel Grey

# Material and colour

## LAINÉ - WOOL

Laine is a very exclusive wool fabric consisting of 92% pure New Zealand wool and 8% polyamide. The elegant melange effect gives the fabric a wonderfully vibrant look. Furthermore, it is Oeko-Tex certified and EU Eco-labelled.



Antracit



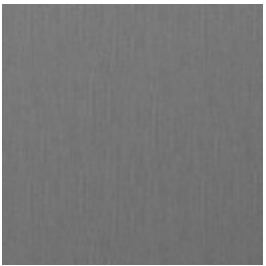
Beige



Dark Blue



Dark Grey



Grey



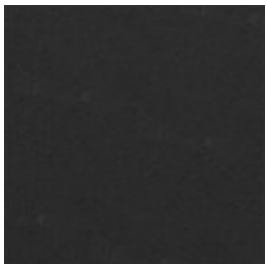
Light Blue



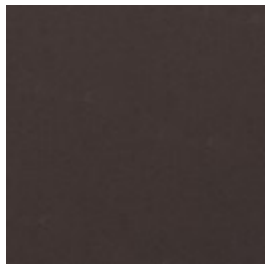
Light Brown

## QUATTRO TRACEABLE - LEATHER

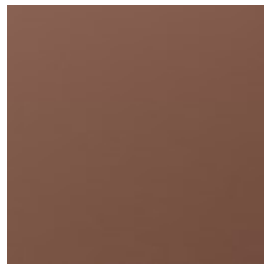
Quality leather from European cattle. Quattro traceable leather is tanned without the use of chrome and can always be traced back to the cattle's area of origin. The leather is lightly surface treated and dyed, which ensures the appearance and colour of the leather.



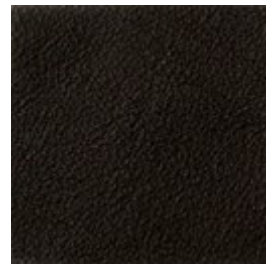
Black



Brown



Cognac



Dark Brown

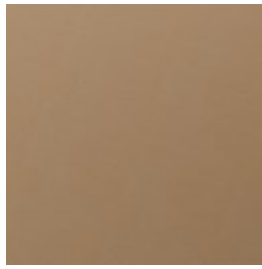
## Material and colour



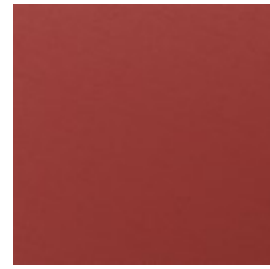
Grey



Ice



Nougat



Red



White

## Legs



Oiled oak



Smoked Oak



Walnut



White oiled oak

## We are here to help

A dedicated phone number and e-mail address is available for you and your product inquiries:

Email: [lineone-en@steelcase.com](mailto:lineone-en@steelcase.com)

Phone: +800 2000 4000